

---

# ***Amendments to the Intrastat statistic statement, applicable starting with January 2015***

*22 December 2014*

---

## ***In brief***

Recently were published the Order No. 567 of the INS president regarding the establishment of a limit value for the collection of statistic information regarding community trade with goods in 2015 and the Order No. 569 of the INS president regarding the norms of supplement of the Intrastat Statistic statement.

---

## ***In detail***

Starting with January 2015, in the Intrastat Statistic statement, on the community dispatches flow will be added the following two new fields:

- Fiscal identification code of the commercial partner from the European Union to whom the goods are physical dispatched;
- The country of origin for intra - community dispatches.

The 2015 version of the Combined Nomenclature, contains 21 new codes of 8 digits while, other 14 codes of 8 digits were eliminated as compared with the version of 2014.

Moreover, starting January 2015, under the nature of transaction code 5 will be included the returns of goods which have not been subject of processing and are returned to the owner (goods that until present time have been included under the nature of transaction code 4).

*[Source: Official Gazette of Romania, Part I, No. 841/18 November 2014; Official Gazette of Romania, Part I, No. 854/24 November 2014]*

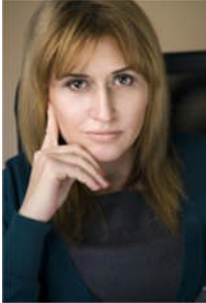
## ***The takeaway***

Starting with the Intrastat Statistic statement related to January 2015, the providers of statistic information will fill in also the two new fields added to the Intrastat Statistic statement, on the community dispatches flow.

---

## **Let's talk**

For a deeper discussion of how this issue might affect your business, please contact:



Mihaela Mitroi, *Partner*  
[mihaela.mitroi@ro.pwc.com](mailto:mihaela.mitroi@ro.pwc.com)



Ionut Simion, *Partner*  
[ionut.simion@ro.pwc.com](mailto:ionut.simion@ro.pwc.com)



Daniel Anghel, *Partner*  
[daniel.anghel@ro.pwc.com](mailto:daniel.anghel@ro.pwc.com)



Diana Coroaba, *Partner*  
[diana.coroaba@ro.pwc.com](mailto:diana.coroaba@ro.pwc.com)

### **PwC Romania**

Lakeview Building  
301-311 Barbu Văcărescu Street  
Sector 2, Bucharest  
Tel.: + 40 21 225 3000  
Fax: + 40 21 225 3600